



Glenn Howells Architects

US

We are an award-winning design studio with national and international reach. Underpinning our practice is an approach rooted in the constant exploration of ideas about how buildings and cities are built and how they can improve the lives of individuals and communities.

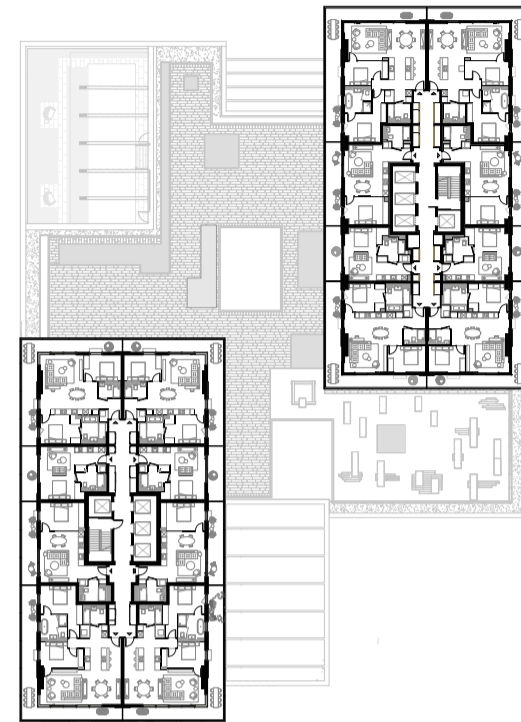
In keeping to these core principles, we have secured a reputation for delivering high quality buildings across all sectors and masterplans which have transformed large parts of UK's largest cities.

We are fortunate to work with creative people who share our vision. We have built long-lasting and trusting relationships with our team, clients and collaborators. These relationships have allowed us to push boundaries to develop transformational and bespoke design solutions, and which are already responding to the challenges of a post-pandemic world.



CLIENT
UNITS

ECOWORLD BALLYMORE
766 APARTMENTS



WARDIAN LONDON

LONDON E14

At Wardian London (London E14) full wrap-around balconies signal the distinctiveness of this pair of residential towers at Canary Wharf.

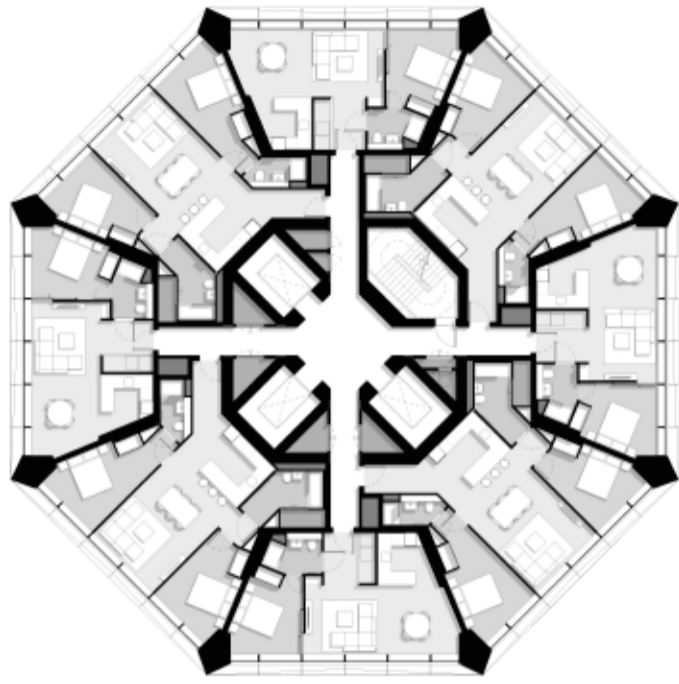
Resolving a difficult dockside site alongside the elevated DLR track, GHA worked in a highly collaborative way with Tower Hamlets and the GLA to achieve planning in just six months.

The 767 apartments of the 55 and 50 storey blocks sit above a podium containing the elegant lobby, communal facilities, retail and a waterfront café.



CLIENT
UNITS

ARGENT AND FEDERATED HERMES
346 APARTMENTS



OCTAGON

BIRMINGHAM

Octagon offers a mix of 346 spacious new homes in the first pure octagonal high-rise residential building in the world.

Making the most of its location on the Birmingham ridge, Octagon's collection of high quality, spacious homes will offer uninterrupted views across the city.

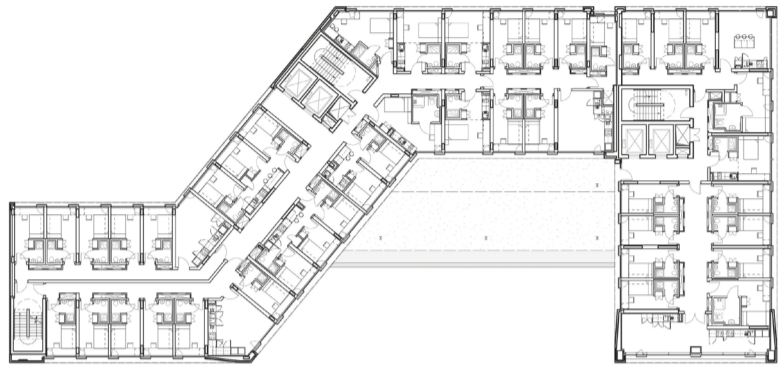
Instantly recognisable from across Birmingham, Octagon will be a unique 49 storey, 155 metre, build-to-rent scheme.





CLIENT
UNITS

URBANEST
669 STUDENT BEDROOMS



URBANEST KING'S CROSS

LONDON N1C

Urbanest's 27 storey slender tower has become a landmark on the eastern edge of the King's Cross regeneration area and has set a new design quality standard for student housing.

The scale of the development is successfully broken down using a sculpted façade on the main tower and a 14 storey shoulder block. The rooms are a mix of 1-bedroom studios and a range of cluster type apartments (from 2-beds up to 8-beds) arranged around a shared living and dining space.

The residences are approached via a south-facing courtyard and a double-height reception area animated by a café that also creates an active frontage to York Way. Further communal areas and terraces top the shoulder block and roof of the main tower.





CLIENT
UNITS

URBAN SPLASH
234 APARTMENTS



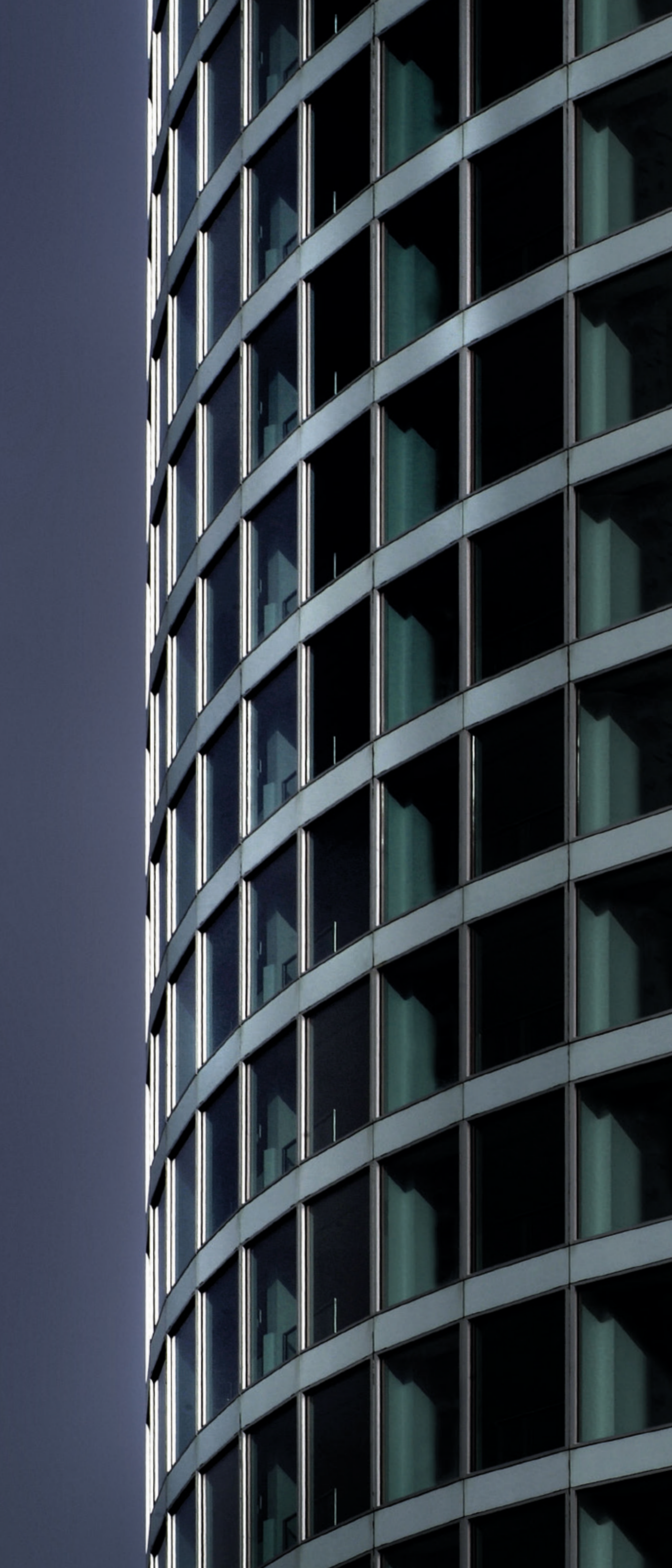
ROTUNDA

BIRMINGHAM

The Grade II listed, 22-storey Birmingham landmark was re-clad in anodised aluminium, removing fifty percent of the concrete cladding and increasing the glazed area.

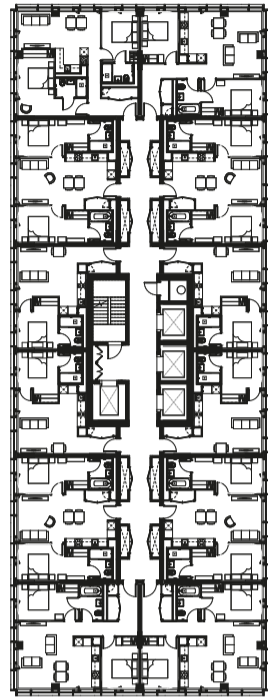
The re-design fulfils the compromised vision of the Rotunda's original architect James Roberts, while the textured glass provides external animation to the building.

A smart floor plan was devised that made the most efficient use of space, whilst also providing a glamorous reception area and spacious lobbies to each floor.



CLIENT
UNITS

MODA LIVING
481 APARTMENTS



THE MERCIAN

BIRMINGHAM

At 42 storeys, 212 Broad Street, will be one of Birmingham's tallest residential towers and an elegant addition to the skyline, providing an important western marker for the city.

The 481-apartment building has been designed exclusively for rent. Providing a range of apartment sizes, future residents will be able to organise their daily lives through their smartphone and a 24-hour concierge service.

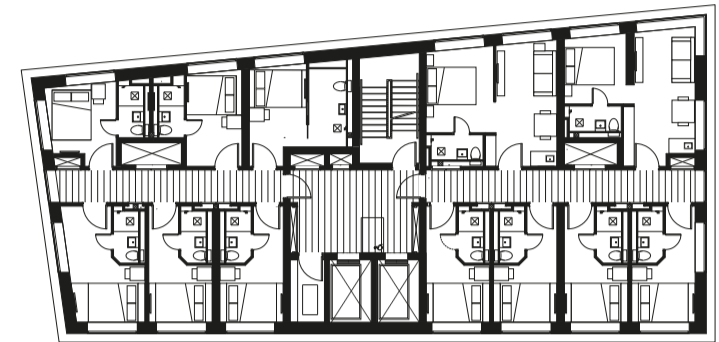
The building will also feature a residents' lounge, health centre and dining club, an additional retail and leisure space in the three-storey podium and a 200 metre rooftop running circuit.





CLIENT
UNITS

BLOC
227 HOTEL BEDROOMS



BLOC GRAND CENTRAL

BIRMINGHAM

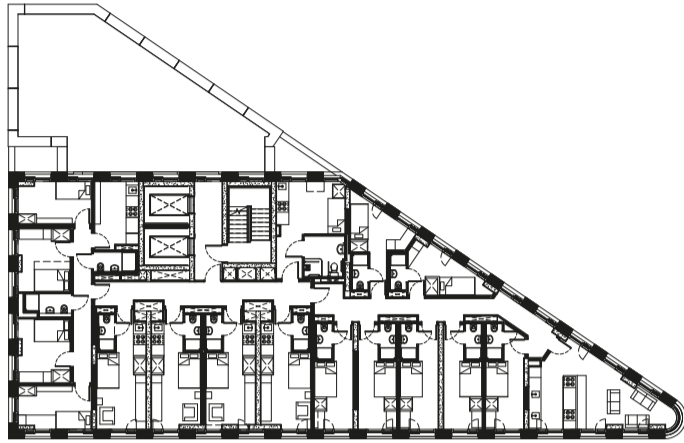
Bloc Grand Central is a 227-room hotel located in the heart of Birmingham city centre.

The 26-storey tower is situated at an important gateway site adjacent to New Street Station. The building's form and fenestration has been carefully considered to serve as a pedestrian wayfinding marker, with public ground floor uses positioned in direct response to the site's surroundings to provide activity and animation.

The building will exhibit BLOC Hotel's core brand characteristics of intelligent utilisation of space, luxury materials and innovative technologies and act as a flagship for the Birmingham-based operator. The building is also to be designed in a way that respects the principles of sustainable development.

CLIENT
UNITS

URBANEST
454 STUDENT BEDROOMS



URBANEST VAUXHALL

LONDON SW8

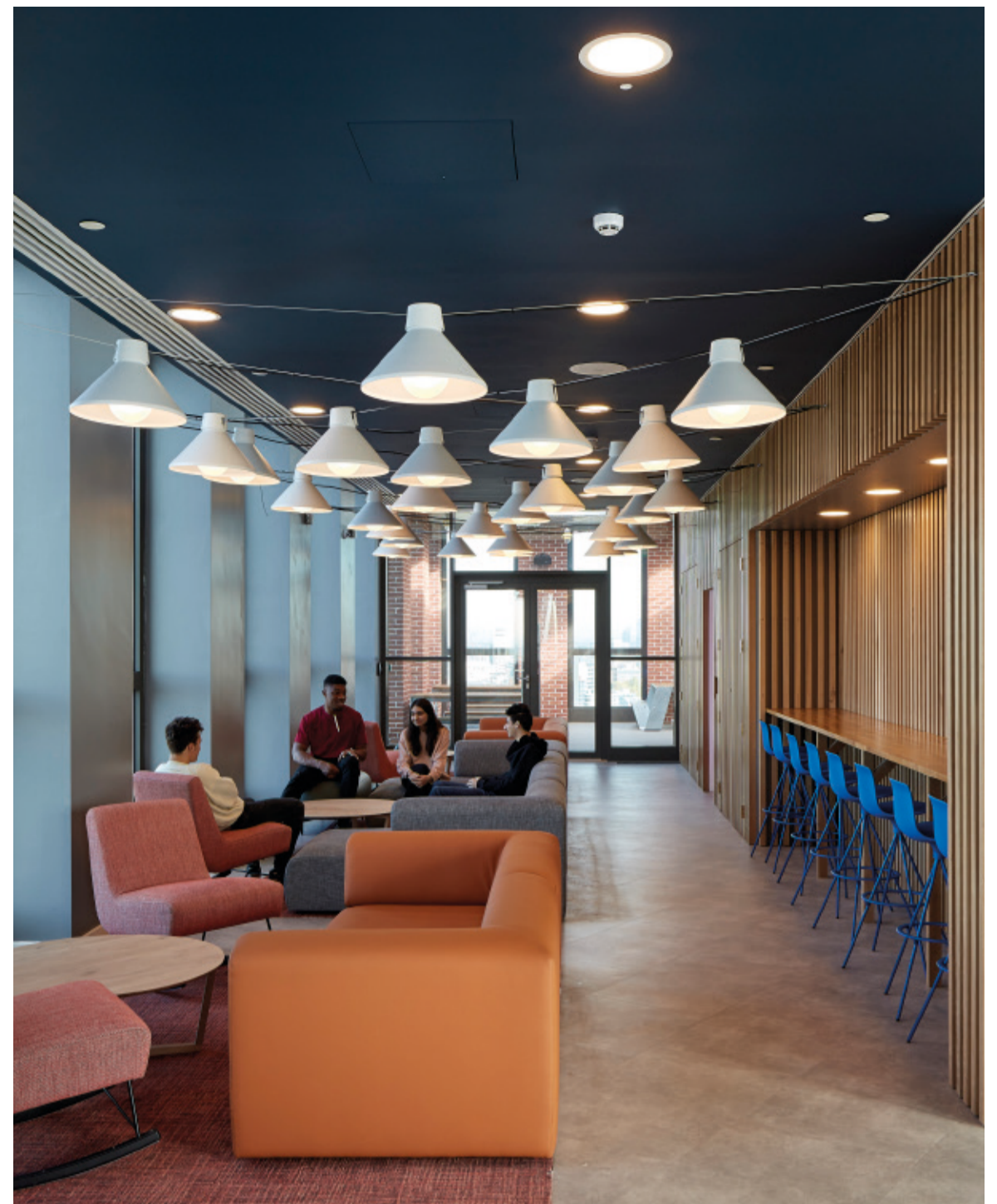
Following the successful completion of Urbanest King's Cross, GHA was appointed as architect to develop the proposals for a new residential tower in Vauxhall.

The design comprises a slender 32 storey tower offering 454 student bedrooms through a mixture of cluster flats and self-contained studios.

A key feature of the design is the well-crafted bull-nose apex at the south-west corner of the building. Formed from curved glass, the full-height windows look out towards the new US Embassy at Nine Elms and Battersea Power Station.

At the top of the tower, there is a generous rooftop terrace and further communal lounge. This 'room in the sky' provides spectacular views towards central London.

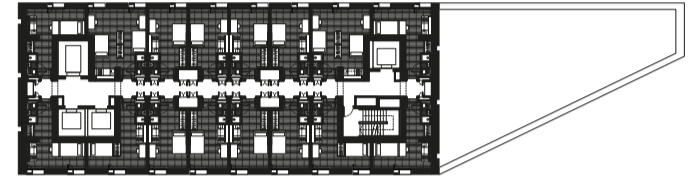
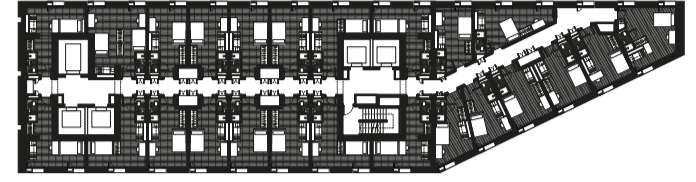






CLIENT
UNITS

GMS (PARKING) LTD
850 STUDENT BEDROOMS



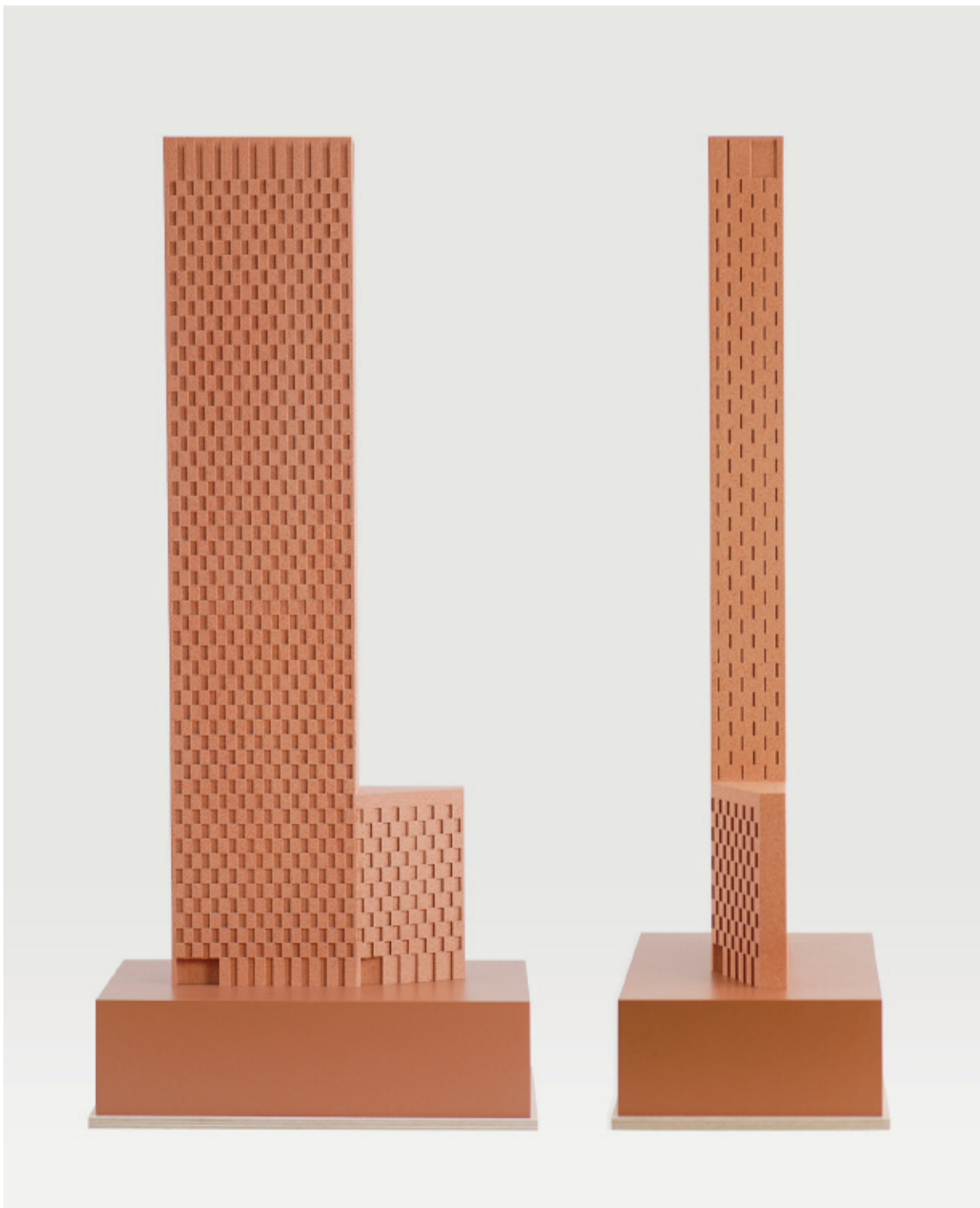
STUDENT CASTLE

MANCHESTER

Standing at 55 storeys, this slender tower adjacent to Manchester's Oxford Road Station aims to establish a new city landmark that will bring Manchester's industrial heritage to the skyline.

Providing a contemporary and elegant interpretation of the area's historic red brick buildings, this ambitious project will create an attractive and desirable place for students to live and work whilst enjoying breath-taking views across the city.

The solid mill 'chimney' language defies many modern skyscrapers and instead creates an expression with a real sense of 'being of Manchester'. The slenderness is reinforced by its homogenous skin of brick panels that alternates on every floor to open up glazed slots and add relief to the façade.



Glenn Howells Architects

321 Bradford Street
Birmingham B5 6ET
+44 (0)121 666 7640

Middlesex House
34-42 Cleveland Street
London W1T 4JE
+44 (0)207 407 9915

mail@glennhowells.co.uk
glennhowells.co.uk

